

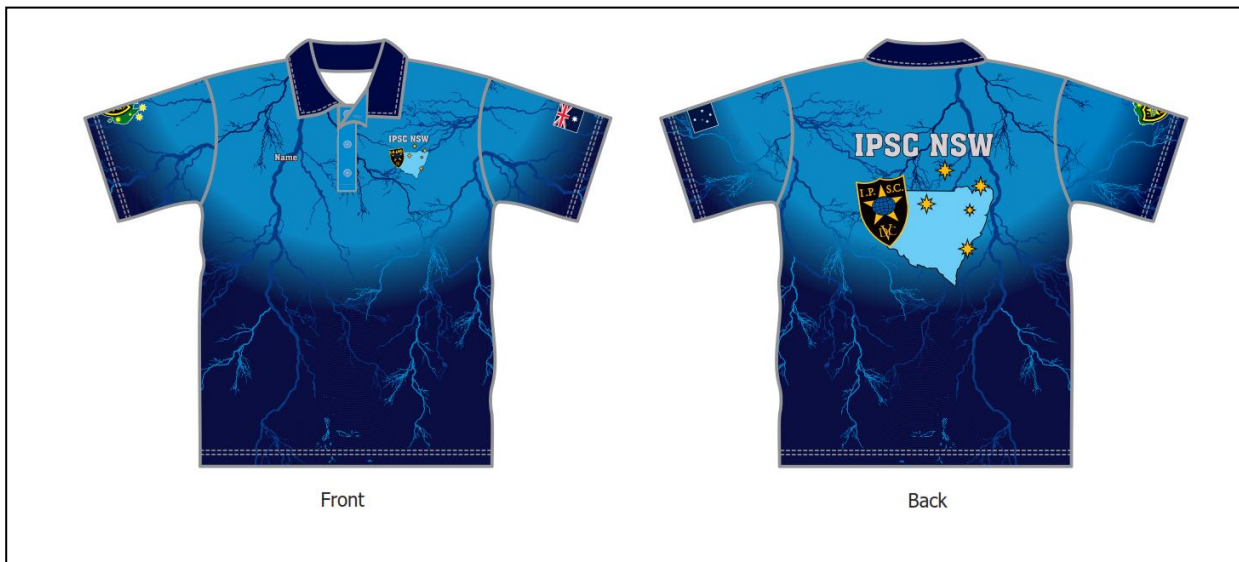


IPSC (NSW) Inc.  
P.O. Box 586  
Blacktown NSW 2148

Web: [www.ipswnsw.org.au](http://www.ipswnsw.org.au)  
Email: [secretary@ipswnsw.org.au](mailto:secretary@ipswnsw.org.au)

# NEW IPSC NSW SHIRTS!

The IPSC NSW Representative teams at the 2017 Nationals will be wearing newly designed team shirts. We will also be making these new IPSC shirts available to all current NSW members (minus the team logos and text), as shown below.



If you would like own some of these new shirts in time for the 2017 Nationals we will need your order before 22<sup>th</sup> February. Shirts can have your name (proper name, no nicknames) shown on the right breast area. The shirts are made from a lightweight, breathable microfiber fabric. Cost to current IPSC NSW members is \$40 per shirt including GST. Postage is an extra \$10 if you can't collect in the Sydney region.

## Order Form –

Name - \_\_\_\_\_ IPSC number - \_\_\_\_\_ Qty - \_\_\_\_\_

Size - \_\_\_\_\_ Name on Shirt? – Yes\_\_ No \_\_  
*(First or Given name)* *(Family name)*

Payment can be bank deposit to IPSCNSW (St George Bank, BSB 112879, Account 043885478), please include your name and IPSC number as reference. Or cheque or money order to the post office box listed above.

Please place orders by email or post and we'll advise when shirts are ready for delivery.

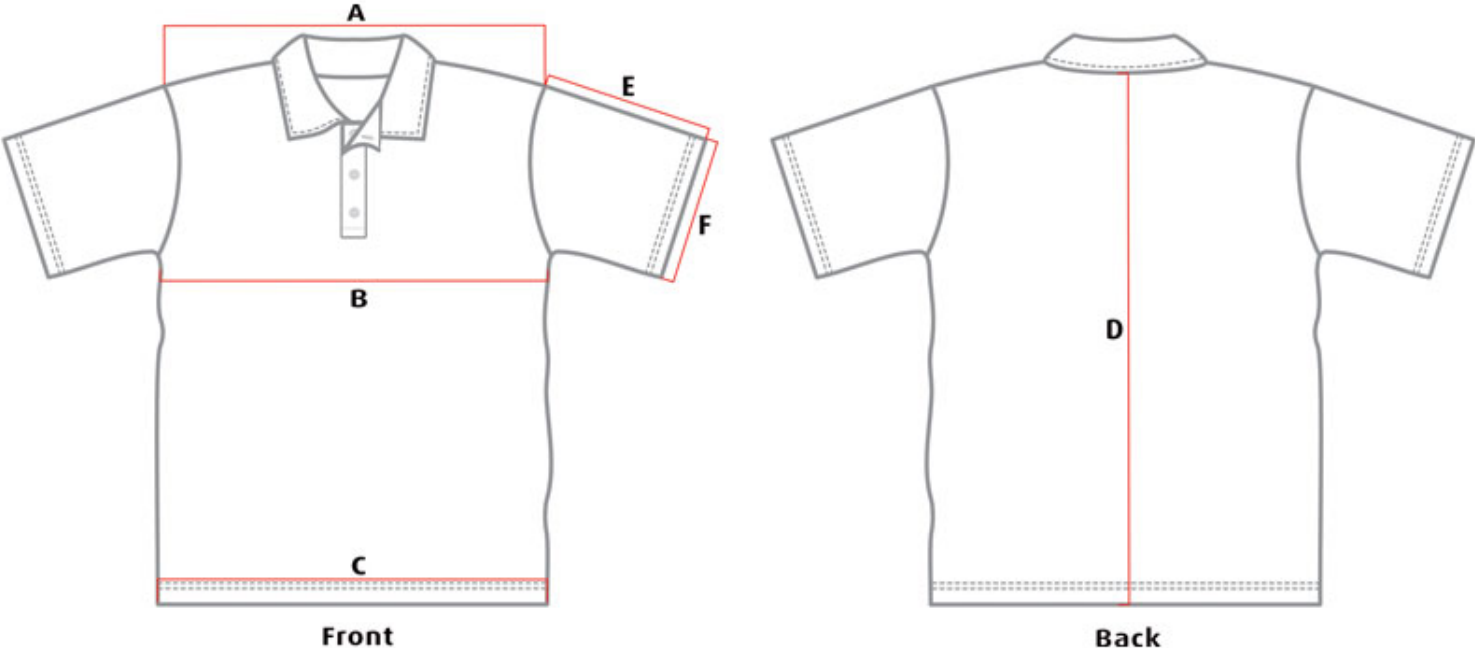
Please use the chart attached to select sizing.

# GARMENT SPECIFICATION

Pattern 052 - POLO SHIRT UNISEX ADULT FOLDOVER COLLAR SHORT SLEEVE SET IN

Monday, May 25, 2015

Mens Sizes



Measurements in 1.0 cm

Tolerance +/- 1.0 cm

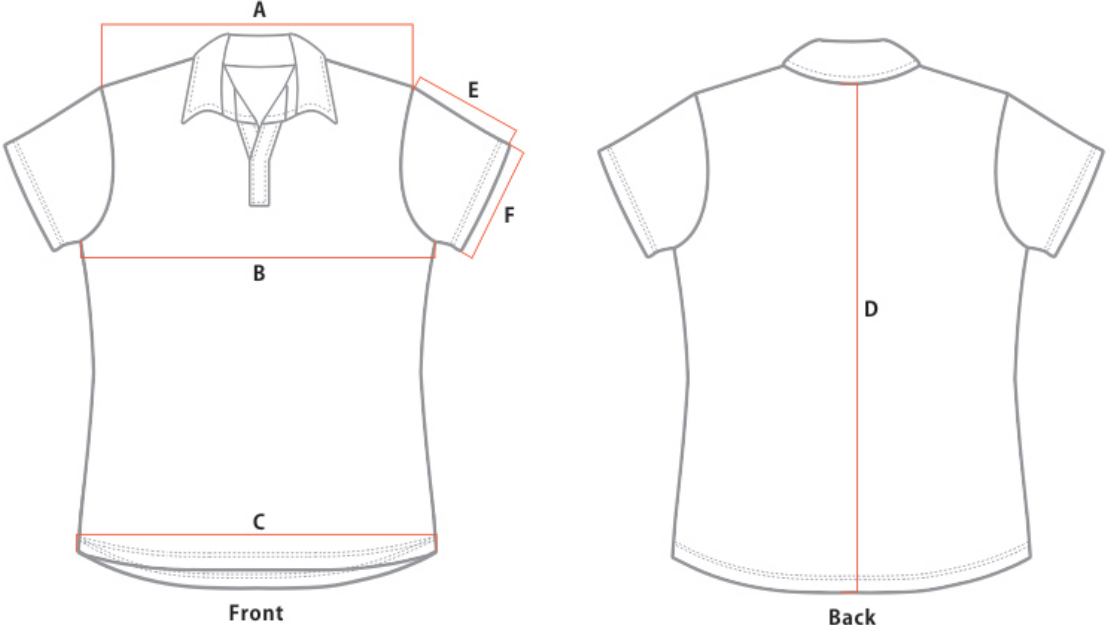
	XS	S	M	L	XL	2XL	3XL	4XL	5XL
B. HALF CHEST	51.0	53.0	56.0	58.0	61.0	65.0	69.0	73.0	77.0
D. CENTRE BACK	68.0	70.0	73.0	75.0	78.0	82.0	86.0	89.0	93.0

# GARMENT SPECIFICATION

Pattern 099 - POLO SHIRT LADIES ADULT

Monday, November 17, 2014

## Ladies Sizes



Measurements in 1.0 cm

Tolerance +/- 1.0 cm

	8	10	12	14	16	18	20	22	24
B. HALF CHEST	47.0	49.0	51.0	53.0	55.0	58.0	60.0	63.0	66.0
D. CENTRE BACK	62.0	64.0	66.0	68.0	70.0	72.0	74.0	76.0	78.0